



What's Happening at HPA This Week?

- LOWER SCHOOL
- MIDDLE SCHOOL
- UPPER SCHOOL
- ALL-SCHOOL

Message from the Head of School

Aloha HPA 'ohana,

In the last week, I have been moved by the generosity of so many in our community — wonderful gifts supporting the HPA Fund and various programs and projects, time and aloha from our volunteers, and the growing excitement around our annual Alu Mai fundraiser for Financial Aid. There is much to be thankful for!

Equally inspiring are the bags full of canned goods that have been pouring out of cars at our Village Campus drop-off and those boxes being delivered to food banks by student clubs at the Upper Campus. Our parents and families are leading the charge and partnering with our young people who naturally approach situations with open hearts and an eagerness to give.

Thinking of others and our willingness to have positive impacts in any way we can is a mentality that is a gift to our students. I believe there is a healthy balance of nature and nurture in the desire to help others. We are innately wired to care for one another and give, while needing the guidance and mentoring to foster this idea. Our students have great role models in these efforts — thank you.

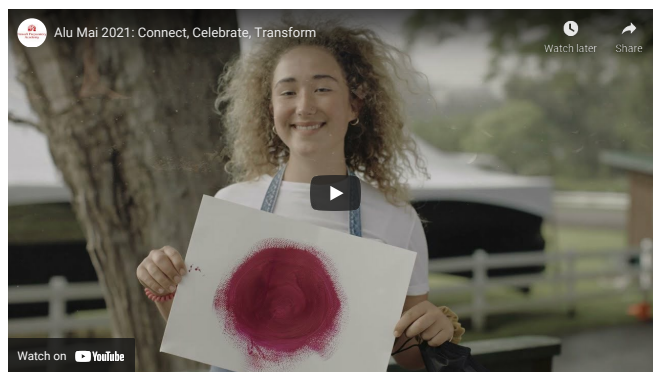
I am truly grateful for the connections of support and care in our school and extended community. There is a contagious energy of good that is shared between you, your children, and the work we do, and it is this shared space of generosity that inspires reciprocity and wellness. At this time of Thanksgiving, I say mahalo nui loa for your inspiration, shared work, and guidance for good. Happy Aloha Friday!

Gratefully,

Fred Wawner
Interim Head of School

Important documents:

- [HPA Upper School COVID-19 Travel and Quarantine Policy 2021](#)
- [HPA Village Campus COVID-19 Travel and Quarantine Policy 2021](#)



Lower School

From the desk of your Division Principal, Dora Kwong

Aloha Lower School families! It is hard to believe that Thanksgiving is upon us! As always, it has been a bustling time in the Lower School and this letter will include a number of updates as our next All School Bulletin will be on December 3, due to the holiday break.

This past Wednesday, our Student Council leaders met with Mr. Wayne Higaki, Assistant Administrator/Fund Development & Support Services of Queen's North Hawaii Community Hospital to receive our donation of \$1,173.61 to thank the hospital for their care of COVID-19 patients. Mr. Higaki shared that he felt honored that our Lower School Student Council selected the hospital as the recipient of our community service efforts.



Coming up on Monday, December 6, and Monday, December 13, is our next installment of virtual parent sessions, this time focusing on technology use amongst our students. Please join us as we share and discuss appropriate technology usage, as well as the impacts of technology on social-emotional health in the early grades. The December 6 session will focus on grades K-3, and December 13 will focus on grades 4-8. Both will be from 4-5 pm and feature Ms. Monello, our K-8 Educational Technologist, and Ms. Baydo, our K-8 counselor.

HPA Parent Information Session, Technology in Grades K-3

When: Monday, December 6th, 4-5pm

What: Appropriate Media Use and SEL Impacts, Grades K-3

[Zoom link](#)

Passcode: 022442

HPA Parent Information Session, Technology in Grades 4-8

Monday, December 13, from 4:00 to 5:00 pm

Media Use and Social-Emotional Impacts, Grades 4-8

[Zoom link](#)

Passcode: 625006

Ahead of the tech sessions, please fill out [this survey](#) for the K-3 session, and [this survey](#) for the 4th-8th sessions so we can address any additional questions or concerns.

As we move into the holiday season, we wanted to remind you of our [HPA Village Campus COVID-19 Travel and Quarantine Policy 2021](#). The second semester will start Wednesday, January 5, with face-to-face classes. Unvaccinated students need to be back on island by Wednesday, December 29, and then receive a negative COVID-19 test result from a test administered no earlier than Monday, January 3 in order to be present for the first day of class on January 5. We will not be offering hybrid zoom sessions in lieu of in-person classes.

Finally, we would like to request that drivers coming through the roundabout on our pick-up line refrain from passing cars that are stopped in front of them and loading children. Many thanks for your understanding and care for our keiki.

Have a wonderful Thanksgiving holiday and enjoy your time with your families!

In partnership and gratitude,
Dora Kwong
Lower School Principal



[Edit gallery](#)

Schedule

Our K-5 classes continue with in-person instruction on our Village Campus on Monday, November 22.

We encourage all families to check the [School Calendar](#) in [myHPA](#) for the most up-to-date information. In addition, a list of **Key Dates** (school opening and closures) can also be located on the [Lower School Family Resources](#) tile located in [myHPA](#).

Coming Up

- Friday, November 19, from 5:00 to 6:00 pm: [COVID-19 vaccine informational session](#)
- Tuesday, November 23, from 12:45 to 1:45 pm: Screening testing
- Tuesday, November 23: Food Bank donation collection ends
- Wednesday, November 24: K-12 Faculty Work Day, no classes
- Thursday, November 25 & Friday, November 26: Thanksgiving Break, no classes
- Monday, November 29: Classes resume
- Wednesday, December 1, from 12:45 to 1:45 pm: Screening testing
- Wednesday, December 1: Early release for Lower and Middle School students

Health Services

In an effort to help our families who would like to get vaccinated now that the U.S. Food and Drug Administration has authorized the Pfizer-BioNTech COVID-19 Vaccine for emergency use in children 5 through 11 years of age, HPA will be hosting a vaccination clinic.

We are proud to have partnered with KTA Super Stores to make this happen in as convenient and comfortable a manner as possible on our own campus. In order for them to provide on-campus immunization, we will need to confirm at least 50 students will participate. We ask that you please register in advance [using this form](#) by Monday, November 22 at 12 noon. If at least 50 students register, we plan to host the first vaccine dose on Tuesday, November 23, from 3:30 to 5:30 pm. The second vaccine dose would be offered on Tuesday, December 14, prior to the

start of winter break. All COVID-19 vaccines are provided free of charge.

To support your decision-making, HPA will be hosting an informational Zoom webinar, featuring healthcare providers from our community, at 5:00 pm on Friday, November 19, to help inform families prior to our scheduled vaccination clinic. No pre-registration is required to attend the informational Zoom. However, if you have questions you would like answered during the session, we ask that you please submit them in advance to responseteam@hpa.edu.

Mahalo to our esteemed panelists:

- Dr. Melissa Pulling, Pediatrician from Paniolo Pediatrics and Family Medicine
- Dr. Jonathan Dworkin, Infectious Disease Specialist from Queen's North Hawai'i Community Hospital
- Dr. Britta Zimmer, Naturopathic Doctor and Medical Director from Pacific Quest
- Fred Wawner, Interim Head of School of Hawai'i Preparatory Academy
- Amanda Bamba BSN/RNC, Director of Health Services of Hawai'i Preparatory Academy
- James Hustace, Moderator and HPA Class of 2003

HPA Informational Vaccine Session

November 19, 2021, 5:00 PM Hawai'i (HST)

[Join us here](#)

If you have already vaccinated your child(ren), please email vcinfirmary@hpa.edu and also provide a copy of their vaccination card by **uploading it into the "Immunization Requirement" on Magnus Health through myHPA.**



[Edit gallery](#)

Middle School

From the desk of your Division Principal, Glenn Chickering

Aloha Middle School families! It is hard to believe we are heading into Thanksgiving week! As we look ahead to next week, we are grateful that we will be able to celebrate the Makahiki season with Makahiki Games on our campus and the sharing of our Makahiki Baskets with Kanu o ka 'Aina School. Our grade 8 students will take the lead in hosting the Makahiki Games as our 6th and 7th-grade students compete and our Student council will take the lead in presenting the Makahiki Baskets to Kanu o ka 'Aina. If you have not already, please be sure to sign up with your child's advisory class to contribute to our food baskets.

As we move into the holiday season, we wanted to remind you of our [HPA Village Campus COVID-19 Travel and Quarantine Policy 2021](#). We plan to start the second semester on Wednesday, January 5, with face-to-face classes. In order for an unvaccinated student to attend on January 5, they would need to be back on the island by Wednesday, December 29, and then receive a negative COVID-19 test result from a test administered no earlier than Monday, January 3. Students who are not eligible to be on campus on Wednesday, January 5, will be able to engage with their classes on myHPA and with their teachers by email, but we will not be offering hybrid zoom sessions during that week.

We would like to invite you to attend our next Parent Information Zoom Session on Monday, December 6, and Monday, December 13, from 4:00 to 5:00 pm. These sessions will focus on media use and social-emotional impacts, with Ms. Monello, our K-8 Educational Technologist, and Ms. Baydo, our K-8 counselor. The session on December 6, will focus on K – 3rd grade, while we will focus the December 13 session on 4th – 8th grade.

Monday, December 13, from 4:00 to 5:00 pm

["Media Use and Social Emotional Impacts" Zoom link](#)

Passcode: 625006

Please fill out [this survey](#) for the 4th-8th grade sessions so we can address any additional questions or concerns.

Finally, we would like to request that drivers in our pick-up line do not attempt to pass cars that are stopped in front of them and loading children. Students often run around to the passenger side doors. Many thanks for your understanding and safe driving!

Mahalo,
Glenn Chickering
Middle School Principal

Schedule

Our [Middle School 2021-2022 Daily Schedule](#) continues with in-person instruction on our Village Campus on Monday, November 22.

We encourage all families to check the [School Calendar](#) in myHPA for the most up-to-date information. In addition, a list of [Key Dates](#) (school opening and closures) can also be located on the [Middle School Family Resources](#) tile located in myHPA.

Coming Up

- Friday, November 19, from 5:00 to 6:00 pm: [COVID-19 vaccine informational session](#)
- Tuesday, November 23, from 11:45 am to 12:45 pm: Screening testing
- Tuesday, November 23: Makahiki games
- Wednesday, November 24: K-12 Faculty Work Day, no classes
- Thursday, November 25 & Friday, November 26: Thanksgiving Break, no classes

- Monday, November 29: Classes resume
- Wednesday, December 1, from 12:45 to 1:45 pm: Screening testing
- Wednesday, December 1: Early release for Lower and Middle School students

Health Services

In an effort to help our families who would like to get vaccinated now that the U.S. Food and Drug Administration has authorized the Pfizer-BioNTech COVID-19 Vaccine for emergency use in children 5 through 11 years of age, HPA will be hosting a vaccination clinic.

We are proud to have partnered with KTA Super Stores to make this happen in as convenient and comfortable a manner as possible on our own campus. In order for them to provide on-campus immunization, we will need to confirm at least 50 students will participate. We ask that you please register in advance using this form by Monday, November 22 at 12 noon. If at least 50 students register, we plan to host the first vaccine dose on Tuesday, November 23, from 3:30 to 5:30 pm. The second vaccine dose would be offered on Tuesday, December 14, prior to the start of winter break. All COVID-19 vaccines are provided free of charge.

To support your decision-making, HPA will be hosting an informational Zoom webinar, featuring healthcare providers from our community, at 5:00 pm on Friday, November 19, to help inform families prior to our scheduled vaccination clinic. No pre-registration is required to attend the informational Zoom. However, if you have questions you would like answered during the session, we ask that you please submit them in advance to responseteam@hpa.edu.

Mahalo to our esteemed panelists:

- Dr. Melissa Pulling, Pediatrician from Paniolo Pediatrics and Family Medicine
- Dr. Jonathan Dworkin, Infectious Disease Specialist from Queen's North Hawai'i Community Hospital
- Dr. Britta Zimmer, Naturopathic Doctor and Medical Director from Pacific Quest
- Fred Wawner, Interim Head of School of Hawai'i Preparatory Academy
- Amanda Bamba BSN/RNC, Director of Health Services of Hawai'i Preparatory Academy
- James Hustace, Moderator and HPA Class of 2003

HPA Informational Vaccine Session

November 19, 2021, 5:00 PM Hawai'i (HST)

[Join us here](#)

If you have already vaccinated your child(ren), please email vcinfarmacy@hpa.edu and also provide a copy of their vaccination card by **uploading it into the "Immunization Requirement" on Magnus Health through myHPA.**



[Edit gallery](#)

Upper School

From the desk of your Po'ó Kumu (Division Principal), Ka'ai Spencer

Aloha e nā 'ohana o ka makani! I would like to encourage all parents to utilize the recently published academic reports to guide conversations with children. The teachers have worked very hard to compose reports for all of their students and the student academic reports are now viewable in myHPA. As the saying goes, it takes a village to raise a child. The more we can collaborate as a village from home and at school to support the growth of our students, the more impactful we can be. The academic reports provide a peek into classroom performance and they may reveal trends for areas of improvement, as well as areas of strength!

Next week, students will have classes on Monday and Tuesday and will have the rest of the week off for the Thanksgiving break. There is a lot to be thankful for. I am thankful for the opportunity to [share information about Lā Kū'oko'a](#), which is a Hawaiian national holiday on November 28. Lā Kū'oko'a, also known as Hawaiian independence day, marks the official recognition of the Hawaiian Kingdom as an independent nation by France and Great Britain in 1843. This holiday also features Hawai'i as the first non-European nation in the world to be recognized as an independent country. As one of Hawai'i's major holidays, Lā Kū'oko'a was widely celebrated with large extravagant parties just like most countries celebrate their own recognition of independence on an international platform.

As an independent country, the Hawaiian Kingdom had a very diverse citizenry, known as Hawaiian subjects. For those who are not aboriginals or natural-born Hawaiian subjects, there was a process to gain citizenship called naturalization. In order to be naturalized as a Hawaiian subject, one of the main requirements was a creed that we often hear today, Aloha 'Āina. In recent times, aloha 'āina is narrowly understood to be relative only to caring for the land, being a practitioner, or a farmer. However, aloha 'āina is much deeper than just getting one's hands dirty. Aloha 'Āina is patriotism in its purest form. It is a three-pronged concept that is represented by one's love of ali'i (chiefs, leadership, governance), love of the land, and love of people.

Therefore, in order to be a Hawaiian subject, Aloha 'Āina is the creed, or promise that one must pledge their allegiance. Anyone who aligns to this promise can earn their way to being naturalized as a Hawaiian subject. In other words, this was the primary requirement to be Hawaiian. We are often led to believe that only those who have aboriginal ancestry can hold the label of being Hawaiian. This has not been true since Hawai'i has earned its recognition of national identity and independence and has defined the laws of its citizenry. People of many ethnicities represent Hawaiian nationality. When it comes to diversity, equitable rights, and inclusivity, these are things that have been commonplace in the Hawaiian Kingdom since first being internationally recognized all the way up to the overthrow of Queen Lili'uokalani.

In closing, while aloha 'āina is clearly relevant to sustainability, it is also a promise to maintain love and care amongst Hawai'i's people, and

allegiance to the ali'i. In this time of heightened awareness on sustainability, diversity, equity, and inclusion, we can see that Hawai'i has been involved in these areas for a very long time. Sometimes being progressive means looking back. I am hopeful that this perspective will pave the way for a different approach to addressing these issues. Aloha Lā Kū'oko'a e nā aloha 'āina o ko Hawai'i pae 'āina!

Ke aloha nō,

Ka'ai Spencer
Upper School Po'o Kumu

Schedule

Our [Upper School 2021-2022 Daily Schedule](#) will resume as an 'Ula day with in-person instruction on our Upper Campus on Monday, November 22.

We encourage all students and families to access the [School Calendar](#) in [myHPA](#) for the most up-to-date information. In addition, a list of Key Dates (school opening and closures) can also be located on the [Upper School Family Resources](#) tile located in [myHPA](#).

Coming Up

- Monday, November 22, from 7:30 to 9:30 am: Random screening testing in Kennedy Square, in front of the Auxiliary office
- Wednesday, November 24: K-12 Faculty Work Day, no classes
- Thursday, November 25 & Friday, November 26: Thanksgiving Break, no classes
- Monday, November 29: Classes resume
- Monday, November 29, from 11:05 am to 12:25 pm: Screening testing for all Upper School students
- Wednesday, December 8 to Friday, December 10: Visual Art Show in Gerry Clark Art Center

Senior Capstone Corner

Aloha, my name is Malia Camero. My goal is to provide unhoused teenagers, ages 14-18, on the west side of Hawai'i Island with supplies that are not as easily accessible for them. I have scheduled a collection drive on the Upper Campus on Wednesday, December 1, and I am asking for toiletries (such as shampoo, conditioner, toothbrushes, and deodorant) clothes; and gift cards for places like Target, Starbucks, and Subway. I have also set up an [Amazon Wishlist](#) for anyone who can't donate in person. If you have any questions, please feel free to contact me at mcamero@hpa.edu.

Buy 2 Donate 1!
Help donate items to kids who are aging out of foster care
December 1

Basic Hygiene: Toothbrush, Toothpaste, Deodorant, Shampoo, Conditioner, etc

Reusable Water: Bottles, Hydroflasks, Thermoflasks, etc

Art Supplies: Sketch books, Colored Pencils, Markers, Journals, Paint

Chargers: Cell phone, Chargers, Headphones, Adapters

Comfort Items: Blankets, Socks, Jackets, Stuffed Animals

Any questions? Contact: Ava Koepper akoepper@hpa.edu

BUY 2, DONATE 1
Help give to unhoused teens on the Big Island
December 1st

Toiletries
Shampoo and Conditioner
Washcloth
Toothbrush/Paste
Deodorant
Gift Cards
Clothes

SCAN ME

If you have any questions, feel free to contact mcamero@hpa.edu

Aloha, my name is Ava Koepper. For my capstone project, I will be holding a donation drive beginning Wednesday, December 1, to collect items specifically for teenagers 16-18, who are about to "age out" of the Foster Care system. All donations will go to HI Hopes in Kona, which will distribute items to those in need. I have created an [Amazon Wishlist](#) where you can send items directly to me! If there are any questions, feel free to contact akoepper@hpa.edu.

Ka Makani Athletics

Exciting weeks ahead on-campus for Ka Makani Athletics!

- Saturday, November 20: BLIIF XC Championship at 9:00 am
- Saturday, November 27: HPA Football vs Kamehameha at 2:00 pm
- Saturday, December 4: HHSAA XC Championship at 8:30 am

As a reminder, as of October 23, the following BLIIF guidelines will be in place, for all guests of athletic events:

- ALL spectators MUST BE vaccinated. (No exemptions or exceptions)
- All spectators will need to present their vaccination card and ID at the gate.
- No one under the age of 12 will be allowed at BLIIF events (which requires all in attendance to be vaccinated).
- Spectators will need to be masked at all times.
- No concession stand will be available.
- No outside food/beverage will be allowed.
- Any spectator not following proper guidelines & protocols will be asked to leave.

Residential Life

Aloha Boarding families! With Thanksgiving and Winter Break on the horizon, please make sure to send your child's flight itineraries as soon as possible to travel@hpa.edu, so that we can prepare transportation to and from the airport, and finalize our plans for Winter Break.

Please note that on November 8, the State of Hawai'i aligned with [United States federal international entry requirements](#). There will be no additional State of Hawai'i requirements for passengers flying directly into Hawai'i from an *international destination*. The airlines will screen passengers prior to their departure to the United States. All travelers, international or domestic, will need to provide proof of a negative test prior to boarding. If a student is over the age of 18, they are required to show proof of vaccination prior to boarding their flight. International passengers entering the U.S. from another state or territory will be treated as domestic travelers when entering the State of Hawai'i and will need to follow the [Safe Travels Hawai'i](#) requirements.

Please check your airline(s) requirements before booking your flights. Especially if you are traveling on multiple airline carriers. If you are unsure if your child is allowed to travel to and from the U.S., please visit the CDC website, [Travel Assessment](#), for clear guidance.

College Counseling

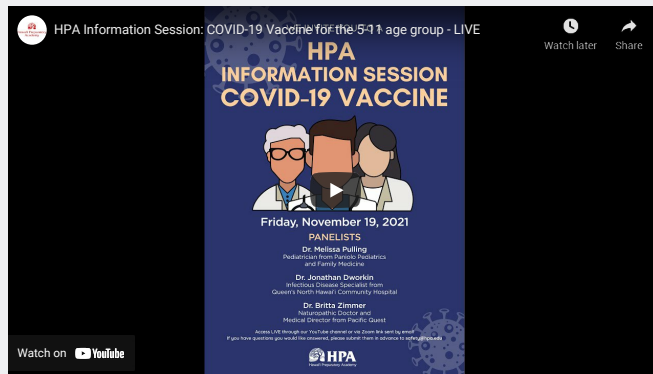
The following virtual college visits are scheduled for the coming week. All visits will take place from 11:15 – 11:45 am. Zoom links for each of these visits can be found in your [myHPA](#) calendar. Parents are welcome to join!

- Monday, November 22: Linfield University, (McMinnville, OR)
- Tuesday, November 23: Gonzaga University (Spokane, WA)

College Financial Aid and Scholarships

For more information on college financial aid and scholarship resources, please see [this email sent on October 6](#).

HPA Information Session: COVID-19 Vaccine for the 5-11 age group



All-School News

Admissions

The 2022-2023 academic year new student admission application is now [available online](#) via the HPA website! For our families with siblings of current students, we would love to hear from you if you're considering applying next year. In addition, if you have friends or extended family who might be interested in attending HPA next year, spread the word and please let us know how we can help expedite the process by writing admissions@hpa.edu.

For re-enrolling families, there is no need to reapply for admission as you will be offered an opportunity to re-enroll in February 2022.

Advancement & Alumni

Aloha and welcome to the [Alu Mai 2021](#) Season in support of Financial Aid! Here you will learn more about the impact of financial aid through the voices of our students, access the fabulous [online art catalog](#), and be able to [raise your "paddle"](#) for Financial Aid.

Alu Mai 2021 Online Auction is almost here! And the art offerings are [amazing!](#) We hope you were able to stop by Isaacs Art Center last night to preview the art offerings and enjoy the music and refreshments!

Mahalo to those of you who have already registered to take part in the online fun – we are so excited to be coming together for this important cause! For those who have yet to [register](#), no worries, there's still time! You can even opt in to get texts!

A friendly reminder: in order to bid in the online auction you will be prompted to vault your credit card. All vaulted credit cards will be purged from our system at the end of the event.

E Alu Mail

'Ohana Association

Aloha HPA parents! We are excited to share information regarding some of the exciting activities going on in the HPA community during the holiday season.

Fall Teacher and Staff Appreciation (Monday, November 22)

This coming Monday, November 22, is the Fall Teacher and Staff Appreciation Day. We invite every parent to participate by emailing a message of gratitude to each of the teachers and staff at the school who have helped your child this year. Email addresses for your child's teachers can be found on [myHPA](#) on your 'Child's progress' page or by selecting 'Faculty & Staff' from the directories tab. Please send your emails on Sunday evening or Monday morning (HST), so that they can start their Thanksgiving week seeing just how much we all appreciate their contributions.

The 'Ohana Association will organize a more elaborate Teacher Appreciation day in spring. Please watch the 'Ohana Association section of future All School Bulletins for more information.

Waimea Christmas Parade (Saturday, December 4)

Each year Waimea welcomes the holidays with the annual Christmas Twilight Parade and this year it's happening with some changes to keep everyone safe. It will be a Drive-Thru Parade from 6:00 to 9:00 pm on December 4, along Ala 'Ohi'a Road.

As always, the parade benefits the Big Island Giving Tree. Each year, the 'Ohana Association participates by organizing a float, assisting with collecting donations, and making a sizable charitable donation. We'd like to invite parents to participate in the following ways:

1. Let us know if you would like to participate in this year's float. To make this happen, we will need a minimum of 15 volunteers to help with the planning and set-up and 10-20 float participants. Please email ohana_vplower@hpa.edu by Monday, November 22, if you are interested in helping.
2. Go to <https://www.waimeatown.org/parade> to make a contribution to the Big Island Giving Tree. Their support of our island communities reaches far and wide. More information on the [Big Island Giving Tree](#) may be found [here](#).
3. This year Santa will be stationed at the end of the parade and will be handing out goodie bags to children ages 12 and younger. The 'Ohana Association will be helping to collect donations and assemble goodie bags. Parents may donate items such as: goodie bags to fill, prepackaged treats, pencils, stickers, bubbles, notepads, and any other festive item your child would think was fun. Monetary donations are also accepted and appreciated. Donations will be accepted from Friday, November 19, through Tuesday, November 28. The assembling of bags will take place on Wednesday, November 29. Please email ohana_vplower@hpa.edu or text 808-896-9648 to coordinate a drop-off of items or to volunteer to help assemble goodie bags.

Charitable Giving Opportunities (through Wednesday, December 15)

In addition to our support of the Christmas Twilight Parade, the 'Ohana Association will be collaborating with the Big Island Giving Tree to collect donations of warm fuzzy non-slip socks for kūpuna blessing bags, and gift cards for teenagers (Starbucks, Subway, Old Navy, Amazon and Dominos are requested, in denominations of \$20-25). Donated items can be dropped off:

- Upper Campus, Tennis Center on December 10, 13, and 15, during the morning student drop-off
- Village Campus, Roundabout on December 9, and 14, during the morning student drop-off

If you prefer shopping online, please use this [Amazon.com gift link](#) (and select "Valerie Harmon's Gift Registry Address" as the shipping address) and we will drop your donations off for you.

Don't forget that you can also donate at the Village Campus to the Food Drive to help local families in need. This program ends on Tuesday, November 23 — on which day families can also choose to bring in fresh foods to donate.

Your Holiday Shopping Can Help Fund HPA Community Activities

Amazon offers a program where a small percentage of your purchase amount will be donated to the 'Ohana Association. It's simple!

1. Go to [this link](#) and select Hawaii Preparatory Academy as your designated charity.
2. Instead of going to Amazon.com to shop on the web, go to smile.amazon.com.
3. If you use the Amazon app to shop from your phone, go to [this webpage](#) to learn how to set up the Amazon iOS or Android app to donate to HPA.

We hope that your ohana has a wonderful Thanksgiving, and are able to connect with and celebrate those whom you love. Please continue to visit the 'Ohana Association section on the [myHPA](#) Resource Page for updates on future events and volunteer opportunities. Stay connected with us by joining the [HPA Parent Resource Hub on Facebook!](#)

Isaacs Art Center

[Isaacs Art Center](#) is free and open to the public, Monday through Friday from 10:00 am to 5:00 pm. Isaacs Art Center Gallery works for sale may also be viewed on our [website](#). Be sure to also visit our [Instagram](#) and [Facebook](#) pages for highlights from ongoing exhibitions. As a reminder, sales from gallery artwork have supported the HPA Financial Aid program since opening in 2004.



2021-2022 COVID-19 Plans & Information

Past HPA communications and other important information can be found on [myHPA](#). We are continuing to make updates to our student and parent resource boards, so please be sure to visit them regularly. For a complete directory of all our health and safety protocols, please review our [2021-2022 COVID-19 Plans and Information](#) tile.



PREVIOUS ALL-SCHOOL BULLETINS

[All-School Bulletin: November 12, 2021](#)

[All-School Bulletin: November 5, 2021](#)

[All-School Bulletin: October 29, 2021](#)

[All-School Bulletin: October 22, 2021](#)

[All-School Bulletin: October 8, 2021](#)

[All-School Bulletin: October 1, 2021](#)

[All-School Bulletin: September 23, 2021](#)

[All-School Bulletin: September 17, 2021](#)

[All-School Bulletin: September 10, 2021](#)

Mahalo to all our students, families, faculty, and staff for everything you're doing to keep our campuses and community as safe as possible as we navigate the start of our 2021-2022 academic year. Together we are #KaMakaniSTRONG!

Take the next step

[REQUEST INFO](#)

[VISIT CAMPUS](#)

[APPLY NOW](#)



Hawai'i Preparatory Academy

65-1692 Kohala Mountain Road
Kamuela, HI 96743

808.885.7321



[About](#)

[Admissions](#)

[Academics](#)

[Student Life](#)

[Athletics](#)

[Arts](#)

[Giving](#)

[Site Map](#)

[Privacy Policy](#)

[ALUMNI](#)

[PARENTS](#)

[STUDENTS](#)

[FACULTY & STAFF](#)