



What's Happening at HPA This Week?

[LOWER SCHOOL](#)[MIDDLE SCHOOL](#)[UPPER SCHOOL](#)[ALL-SCHOOL](#)

Message from the Head of School

Aloha HPA 'ohana,

Last weekend I completed my annual capstone experience — coaching the boy's varsity basketball team. I've been lucky enough to get this opportunity for the last 13 years at HPA.

The process is always a beautiful mix of things I can count on, and things that are brand new. In sports, similar to the capstone experience, we take a group of diverse individuals with different ideas and abilities, establish some goals, and then get to work building skills around communication, creativity, critical thinking, and collaboration. We build structures and strategies in practice and then try them out in games. When they work, we fine tune them and try to replicate them. When they fail, we study why and try to fix them. We are in a constant iterative process, with a goal to be at our best at the end.

Sports are an easy metaphor for me. Feedback is immediate, very clear, and sometimes very public. In our case on Saturday, we were lucky enough to have folks view it on live television. It is an exceptional learning experience to be in a crowded gym, loud enough that you can only hear your teammates right next to you as you try to complete a series of plays together that you worked on a few days ago in practice. In order to find success, you must slow your mind down and find your focus in order to perform. The balance of individual success and the willingness to sacrifice personal gain for the success of others is another natural growth point in the process. These are skills that will translate well in future endeavors.

It's been a few days now since this year's culminating assessment, the BIIF championship game. Like every year, there is only one winner. Looking into teary eyes, through teary eyes, in a crowded locker room of the Hilo Civic Center, I tried to explain to a group of young people that the pain they were feeling is a good pain. It is the only way it should feel. When you open up your chest and give all of your heart to something, it hurts when it doesn't work out. That feeling is both excruciating and rich. I don't like it, but I've learned that it is the feeling we should be willing to risk enduring for the potential success of any venture. On another day, I'll explain to them that we should invest the same attention, care and heart into everything we do, from our classes, to our jobs, to our relationships. Be all in. Be vulnerable. Risk failure and pain. This is the pursuit of excellence.

The agony of defeat comes with a few days of angst. Nothing really tastes that good, things I think are funny, just aren't, and I usually grow a beard and debate getting a tattoo. I always consider changing careers to become a chef, gardener, or fisherman after watching multiple documentaries on each lifestyle. The pain eventually fades and then there is time for reflection. This leads to clarity, with new ideas on improvements, modifications and growth. It is a regenerative process. Time well spent.

I am so grateful to have the opportunity to pursue excellence. In this way, HPA is an amazing platform for us all.

As we head into the weekend knowing there are much larger, more serious, and potentially world-altering events happening in Ukraine, surrounding areas, and around Europe, we send love and strength to those who are directly impacted. We wish for prompt and peaceful resolutions and decisions that are made for the betterment of all.

Happy Aloha Friday!

Gratefully,
Fred Wawner
Interim Head of School





Lower School

From the desk of your Division Principal, Dora Kwong

Aloha Lower School Families! With our curricular programming based on the foundation of our Core Learning Skills (collaboration, communication, creativity, and critical thinking) and Core Learning Characteristics (awareness, inquisitiveness, initiative, perseverance, and responsibility), Lower School students benefit from a natural scaffolding of classes and learning experiences that grow, challenge, and expand year to year. Add on top of that the intentionality of our grade level and specialist teachers' mission for inquiry based lessons and experiential opportunities, and you have a recipe for education that inspires and fosters lifelong learning. Our Capstone program is an underscoring of this intentionality and our goal for students to have voice, choice, and ownership of their learning. In 5th grade, the culmination of our lower school experience, our students embark on their official Capstone journey, utilizing all the learning skills and characteristics they have been practicing since they started with us at HPA. See below a message from our Capstone Coordinator, Mr. Dagan Bernstein, as the students prepare for their presentations.

Capstone Update from K-8 Capstone Coordinator, Dagan Bernstein

Aloha kākou. This is one of the most exciting times of the Capstone process with students busy at work creating their final products. Throughout January, students prepared their product proposals and met in groups to share out their product sketches for approval. As each proposal is approved they begin building their prototype in order to get feedback from their peers. Students have been using their collaboration skills to exchange ideas with each other and provide suggestions for improvements. Our Core Value of the pursuit of excellence has been on display as they use their creativity and critical thinking to design, iterate, and develop their products.

Looking ahead, preparations are underway for the community presentations happening the week of April 11-14. I am working with Ms. Kwong and the safety committee in order to decide the safest way to involve families in viewing the presentations. At the minimum, we will be streaming all student presentations via Zoom for families and friends to view. More information will be forthcoming.

Speaking of voice, choice, and ownership of learning, earlier this week, I shared information regarding [Student-Led Conferences in an email sent on February 21, 2022](#). Our conference scheduler, PTC Wizard, opened this morning for families to sign up. We look forward to seeing you in person at the Village Campus as your child(ren) share with you their learning journey thus far. I hope you will see the learning characteristics and skills they have been actively practicing this semester and school year. I always find student-led conferences to be such an empowering and enjoyable experience for all involved. I hope you will, too.

Coming up next Wednesday, March 2nd, we will be celebrating Aloha Shirt Day at the Village Campus. We are thrilled to welcome Dale Hope, HPA parent and author of *The Aloha Shirt: Spirit of the Islands*, to our campus to share the history of Aloha Shirts with our students. We'll have shaved ice, hurricane popcorn, and shirt design activities during lunch and recess to celebrate. Mahalo to Mr. Giff, our K-8 Librarian, and Mr. Hope for setting up this day for us!

As always, mahalo for your partnership, and thank you for choosing HPA to be the guiding path on your child's journey.

Have a wonderful weekend, Lower School 'ohana.

With aloha,

Dora Kwong
Lower School Principal

Schedule

Our K-5 classes continue with in-person instruction on our Village Campus on Monday, February 28.

We encourage all families to check the [School Calendar](#) in [myHPA](#) for the most up-to-date information. In addition, a list of [Key Dates](#) (school

opening and closures) can also be located on the [Lower School Family Resources](#) tile located in [myHPA](#).

Coming Up

- Friday, March 4: 4th Grade Plant Sale; check Seesaw for sign-up updates! Cash Only
- Thursday, March 10 & Friday, March 11: Student-led Conferences, no classes
- Monday, March 14 – Friday, March 25: Spring Break, no classes (please be mindful of our travel policy)
- Monday, March 28: K-12 Faculty Work Day, no classes
- Tuesday, March 29: In-person classes resume

Past Email Communications

All past email communications can be accessed by visiting the [Lower School Family Resources](#) tile on [myHPA](#) and scrolling down to 'Past Parent Email Communications, 2021-2022'.

myHPA

In addition to Seesaw, many important resources can be located on our community portal, [myHPA](#). Two key resource boards that we would like to draw your attention to are the 'Lower School Family Resources' and the 'Return to Campus 2021-2022 Plans and Information'. For [myHPA](#) concerns, please contact help@hpa.edu.



Middle School

From the desk of your Division Principal, Glenn Chickering

As we settle back into our campus routines, we are seeing a number of capstone projects coming to fruition. This week's assembly featured four students presenting to their classmates to share their work and invite students to support their projects. These presentations highlighted work with a local animal shelter, partnership with an island shelter for the homeless, a [YouTube channel focused on healthy relationships](#), and a virtual reality trip to a doctor's office to help deal with the stress that medical procedures can cause. Another student created bags of fresh produce sourced from HPA's and other Waimea schools' gardens and recipe ideas and delivered them to Waimea families at the St. James community meal.



A few of our students would also like to share their Capstone projects with you and ask for support:

- Hello! My name is Cameron Goodwin, and I am an 8th-grade student at HPA. For my capstone project, I am organizing a donation drive for materials needed by the [Three Ring Ranch Exotic Animal Sanctuary](#). The Three Ring Ranch is an exotic animal sanctuary that takes in and rescues animals from bad homes. Please check [out my flyer that has all the materials the ranch is in need of](#).

- Hello, my name is Chazz Pagano I want to share about my capstone. My project is all about helping make the lives of people experiencing homelessness easier. I have partnered with Hope Services Hawaii, a non-profit organization that provides temporary shelter to those experiencing homelessness on the Big Island. I am conducting a non-perishable food drive in the middle school. I am looking for nutritious

foods such as canned meat, and vegetables, as well as other shelf stable items. All of the donations received will be going to Hope Services Hawai'i. The donation boxes will be set up around the middle school from February 28 to March 4th. Thank you for your time in reading about my capstone. All help and donations are greatly appreciated.

Capstone Update from K-8 Capstone Coordinator, Dagan Bernstein

Aloha kākou. Over the past two months, our capstone advisory groups have been focused on creating their final products. From planting seeds to animating videos, to building bodysurfing hand planes and skateboard ramps, students are hard at work bringing their ideas to life and showcasing their creative skills. It has been joyful to witness the students actively applying the core academic skill of critical thinking by finding solutions to problems as they navigate the creative process. It will be exciting to see their final products come to life as they prepare them for submission over the coming weeks.

Looking ahead, preparations are underway for the community presentations happening the week of April 18-22. I am working with Mr. Chickering and the safety committee in order to decide the safest way to involve families in viewing the presentations. At the minimum, we will be streaming all student presentations via Zoom for families and friends to view. More information will be forthcoming.

Next Wednesday, March 2, will be designated Aloha Shirt Day at the Village Campus. We are thrilled to welcome Dale Hope to our middle school assembly to share the history of Aloha Shirts with our students. We'll also have shaved ice and hurricane popcorn during lunch to celebrate the day. Please help your child remember to wear an aloha shirt next Wednesday.

Earlier in the week, we shared instructions about signing up for Student-Led Conferences with your child's advisor.

These conferences are a key piece of our feedback cycle, and combined with our intake conferences at the beginning of the year, our progress reports throughout the year, easy-to-access grade books on [myHPA](#), and teacher communications — they provide an important opportunity for students to lead the discussion about their own learning.

Students will be reflecting on what they have learned, sharing accomplishments through a slide presentation celebrating their growth as a learner. Using HPA's core skills of collaboration, communication, creativity, and critical thinking as the framing, these conferences give students an opportunity to share work that they are proud of and showcase skills they can use across all subjects and projects.

Please note that for these student-led conferences, you will be meeting with your child and their advisory only.

Signing up for your conference



Parent Conference Scheduler

Beginning **Friday, February 25**, you will be able to sign up for your conference by logging into [myHPA](#) and clicking on the **Parent Conference Scheduler** located on the resource board. Please book your conference **no later than noon on Tuesday, March 8**.

You will automatically be logged into our online parent-teacher scheduler, **PTC Wizard**, which will allow you to schedule your own appointments with your child's teacher(s). If you need help, please [refer to these instructions](#) or contact Lynn Kakugawa at 808-885-2501 or email at lkakugawa@hpa.edu

Our schedule for the week of Monday, March 7 – Friday, March 11:

- Monday, March 7 – Wednesday, March 9: Our regular Middle School Schedule.
- Thursday, March 10 – Friday, March 11: Student-led Conferences by appointment.
- Please note that there will be no classes on March 10 and 11.
- Childcare will be available for HPA siblings during your conference time. Please reach out to Ms. DeMille to schedule your child for childcare: mdemille@hpa.edu

Spring Break begins Monday, March 14, and classes resume on Tuesday, March 29.

Have a great weekend!

Mahalo,
Glenn Chickering
Middle School Principal

Schedule

Our [Middle School 2021-2022 Daily Schedule](#) continues with in-person instruction on our Village Campus on Monday, February 28.

We encourage all families to check the [School Calendar](#) in [myHPA](#) for the most up-to-date information. In addition, a list of **Key Dates** (school opening and closures) can also be located on the [Middle School Family Resources](#) tile located in [myHPA](#).

Coming Up

- Thursday, March 10 & Friday, March 11: Student-led Conferences, no classes
- Monday, March 14 – Friday, March 25: Spring Break, no classes (please be mindful of our travel policy)
- Monday, March 28: K-12 Faculty Work Day, no classes
- Tuesday, March 29: In-person classes resume

Student Support

Ms. Baydo (K-8 School Counselor) rbaydo@hpa.edu and Mr. Ludes (K-8 Learning Specialist) jludes@hpa.edu are available to discuss and support social-emotional and academic concerns for your child(ren). Please connect with them via email.

Past Email Communications

All past email communications can be accessed by visiting the [Middle School Family Resource](#) tile on [myHPA](#) and scrolling down to 'Past Email Communications, 2021-2022'.

myHPA

[myHPA](#) is where you can find **all the resources** related to your child's learning. Three key resource boards that we would like to draw your attention to are the 'Middle School Family Resources', 'Middle School Student Resources', and the 'Return to Campus 2021-2022 Plans and Information'.





Upper School

From the desk of your Po‘o Kumu (Division Principal), Ka‘ai Spencer

Aloha e nā ahe lau makani! It is the season for course registrations! Students in grades 9-11 have begun meeting with their advisors to register for next year's courses, which is always an exciting time. To assist with getting all of our students to think more about their academic journey, please ask your child(ren) about their course requests. It will serve as a great opportunity to learn more about the classes your child(ren) will be taking in the coming year(s). Students should be looking at all of their credit requirements with their advisors to be sure they are fulfilling the needs of each academic department. It can be fun to plan ahead so that freshman students can put themselves in the best position to take the courses they really want in their junior and senior years. If everything is properly planned, there will be a good balance of rigor and joy. This balance is very important to mental health and the student experience during their high school years.

On a different note, I would like to end by sharing a heartfelt aloha for the people that are being affected by the troubling events that are taking place in Ukraine. It is easy to assume a sense of safety in a place that is so far away. However, the impacts of the events taking place will have a ripple effect across the globe. As the conflict continues to unfold, we need to continue to spread peace and love for each other. War is not the answer, there is too much on the line.

Aloha kekahi i kekahi. Love and care for each other. We are all in this together.

Ke aloha nō,

Ka‘ai Spencer

Upper School Po‘o Kumu

Upper School Winter Production performance

Based on the iconic 1985 Paramount movie which was inspired by the classic Hasbro board game, *Clue* is a hilarious farce-meets-murder mystery. The tale begins at a remote mansion, where six mysterious guests assemble for an unusual dinner party where murder and blackmail are on the menu. When their host turns up dead, they all become suspects. Led by Wadsworth the butler, Miss Scarlett, Professor Plum, Mrs. White, Mr. Green, Mrs. Peacock and Colonel Mustard race to find the killer as the body count stacks up. *Clue* is the comedy whodunit that will leave both cult-fans and newcomers in stitches as they try to figure out — WHO did it, WHERE, and with WHAT!

Performances are open to the HPA community and invited guests on **Friday and Saturday, February 25 and 26.**

Schedule

Our [Upper School 2021-2022 Daily Schedule](#) will resume as a Mamo day with in-person instruction on our Upper Campus on Monday, February 28.

We encourage all students and families to access the [School Calendar](#) in [myHPA](#) for the most up-to-date information. In addition, a list of Key Dates (school opening and closures) can also be located on the [Upper School Family Resources](#) tile located in [myHPA](#).

Student Support

Should your child need additional learning support, we encourage you to reach out to JoAn Canning, our Upper School Learning Support Center Director, by emailing jcanning@hoa.edu. In addition, our counselors are ready to assist any student who needs additional support to navigate these unusual and unprecedented times. Please feel free to reach out to the Upper Campus counseling team of Steve Furchner at 808-640-4441 or sfurchner@hpa.edu, and Tiffany Freitas at 808-345-8869 or t Freitas@hpa.edu.

Coming Up

- Friday, February 25 – Saturday, February 26 Winter play performance open to all HPA community and invited guests
- Monday, March 14 – Friday, March 25: Spring Break, no classes (please be mindful of our travel policy)
- Monday, March 28: K-12 Faculty Work Day, no classes

Residential Life

Aloha Residential Families! **Last chance!** The Spring Break Outdoor Program sign-ups close today! If your child is interested in participating in this program, they must sign up today. For more information and a link to the sign-up form, [please follow this link](#). **The HPA dorms will be closed over Spring Break.** Students who do not wish to travel during Spring Break are encouraged to sign up for our Spring Break Outdoor Program.

Last week, an email was sent out to all residential students and families with important information **regarding travel and pre-travel testing for Spring Break**. For more information, please refer to this email, [Spring Break 2022 Travel](#). Please make sure to send in your child's travel itinerary as soon as possible, so that we can make transportation arrangements to and from the Kona Airport.

College Counseling

[Canadian and UK Colleges Info Session Recording](#)

Please [click here for the video link to the February 16 presentation with Dr. Whitney Laughlin](#), an educational consultant who works in the U.S. and Canada. Dr. Laughlin led a session on the advantages and disadvantages of U.S. versus Canadian versus UK postsecondary institutions.

School Day SAT and ACT for Juniors

As part of our standardized testing program, all juniors will take the SAT and ACT tests this semester. The SAT will be administered on Wednesday, March 2, and the ACT will be administered on Tuesday, April 5. Registration and payment for each junior has been completed by HPA. These school day tests will take place from 8:00 am to 1:30 pm in Castle Gym on the HPA Upper Campus. Students will need to arrive at the gym lanai for check-in at 7:30 am on both test days. For more details, [please review this important email sent on February 7](#), regarding the upcoming SAT. Detailed information regarding the ACT will be sent at the beginning of March.

To help familiarize and prepare for these tests, we encourage students to consider the free test prep options below:

- [Khan Academy SAT Prep](#)
- [ACT Academy ACT Prep](#)

Please contact Monica Hattoon-Green at testing@hpa.edu with any questions.

Past Email Communications

All past email communications can be accessed by visiting the [Upper School Family Resources](#) tile on [myHPA](#) and scrolling down to "Past Email Communications, 2021-2022."

myHPA

[myHPA](#) is where you can find [all the resources](#) related to your child's learning. Three key resource boards that we would like to draw your attention to are the Upper School Family Resources, Upper School Student Resources, and the Return to Campus 2021-2022 Plans and Information.



KA MAKANI PLAYERS

Upper School Winter Production performance: Clue

Performances are open to the HPA community and invited guests on Friday and Saturday, February 25 and 26. But if you can't make it, catch it online here.

[WATCH HERE](#)

All-School News

Admissions and Re-enrollment

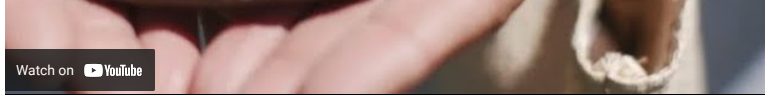
Re-enrollment for the 2022-2023 academic year is underway! The deadline to re-enroll is Tuesday, March 1, 2022. All eligible students will be offered the opportunity to re-enroll via a live link, which was activated in your myHPA account on Tuesday, February 15. All information — including financial aid — will be available for you to review and submit back to the school to identify your intention to return next academic year. We value your 'ohana and look forward to continuing to partner with you in your HPA story! Please email us at admissions@hpa.edu if you have any questions.

Advancement & Alumni

[Alumni Reunion 2022](#) is happening! From May 26-29th, we are thrilled to welcome our Ka Makani back to campus this year for alumni reunion! After two years of virtual celebrations, we look forward to seeing our alumni 'ohana – in person! The weekend will be filled with activities and special moments for alums to connect with classmates and friends across the years. We cannot wait! In the meantime, enjoy some of our amazing content from last year's virtual alumni reunion

HPA Alumni Reunion 2021: Mo'olelo Waimea





Health and Wellness

[HPA's COVID-19 Decision Tree](#)

[HPA's COVID-19 Positive Cases & Close-contact Exposure Policies](#)

Updates (more details below)

- Mask use for both campuses is now optional while outdoors
- Test-To-Stay Program implemented when identified as a direct contact of an individual positive for COVID-19

Mask use optional while outdoors

Students and employees are no longer required to wear masks while outdoors. This is in compliance with the Hawai'i State Department of Health Guidance for K-12 Schools and includes, but is not limited to, participation in outdoor play, recess, physical education, and sporting events. While we feel removing masks when outside is safe and the right path forward, we understand not all families may not be comfortable doing so. If continued mask use while outdoors is the best choice for your 'ohana, please have that discussion with your child(ren) and encourage whatever behavior best suits your situation. Consistent and correct mask use while indoors is still required by students and employees.

COVID-19 Test-To-Stay Program

The Hawai'i State Department of Health has recently offered updated guidance on keeping close contacts in face-to-face learning, regardless of vaccination status. As a result, HPA is launching a Test-To-Stay Program. This will allow in-person learning to continue uninterrupted after exposure to COVID-19, so long as those close contacts remain free of symptoms of illness.

This program applies to all asymptomatic individuals identified as close contacts of an individual who has tested positive for COVID-19. It applies to everyone, regardless of vaccination status, with a slight variation for those students who are not fully vaccinated* and employees who are not up to date** on their vaccinations. The details of the program are outlined below.

Who will be tested?

We will offer testing to everyone—all students and employees—identified as a close contact of an individual who has tested positive for COVID-19 *so long as they are symptom free*.

Symptomatic close contacts of positive COVID-19 individuals are not eligible for the Test-to-Stay Program and are required to abide by [HPA's COVID-19 Positive Cases & Close-contact Exposure Policies 2021-2022](#). For additional information, please refer to our [HPA COVID-19 Decision Tree](#).

What if I'm a close contact with a positive COVID-19 individual in my home?

If you are not able to completely isolate yourself from that individual, you are not eligible for our Test-To-Stay program. There is a separate pathway for return. Health Services will guide you through this return process, and you can also review the [HPA COVID-19 Decision Tree](#) for additional information.

How is the testing done?

Fully vaccinated* students and up to date** employees: Rapid antigen testing done on *day five after last exposure to COVID-19*.

Unvaccinated or not fully vaccinated* students and employees who are not up to date**: Rapid antigen testing done on *day three and again on day five after last exposure to COVID-19 positive individual*.

Where is the testing done?

You may opt to test at home with your personal supply of rapid antigen tests or you may opt to test at the Village Campus (VC students and employees) in the Infirmary or at the Upper Campus (UC students and employees) in the Infirmary.

Can I immediately return to campus after a known exposure?

Yes, regardless of your vaccination status, *so long as you are symptom free*.

Is there a cost associated with the program?

If you opt to test with HPA, there is no cost associated. If you opt to test at home, individual insurance plans cover the cost of up to eight rapid antigen tests per month per covered individual. Please see this [U.S. Department of Health and Human Services link](#) for more information.

If your exposure is to a non-school-related contact, you may still test with us, but we will bill your account for \$14 per test.

The disruption COVID-19 has caused for so many of our students and employees is evident. Our top priority is to keep everyone in school and to do so in the safest way possible. We are extremely grateful to our committed families and employees who continue to show great flexibility and resilience as we work together to navigate these unpredictable times.

If you have questions regarding the COVID-19 Test-To-Stay Program, please reach out to infirmary@hpa.edu (Upper Campus) or vcinfirmary@hpa.edu (Village Campus).

Important information regarding insurance coverage for rapid antigen COVID-19 tests:

According to the [U.S. Department of Health and Human Services](#):

- Insurance companies and health plans are required to cover 8 free over-the-counter at-home tests per covered individual per month.
- Individuals with private health insurance coverage or covered by a group health plan who purchase an over-the-counter COVID-19 diagnostic test authorized, cleared, or approved by the U.S. Food and Drug Administration (FDA) will be able to have those test costs covered by their plan or insurance.
- Over-the-counter test purchases will be covered in the commercial market without the need for a health care provider's order or individualized clinical assessment, and without any cost-sharing requirements such as deductibles, co-payments or coinsurance, prior authorization, or other medical management requirements.
- State Medicaid and Children's Health Insurance Program (CHIP) programs are currently required to cover FDA-authorized at-home COVID-19 tests without cost-sharing.
- There is no limit on the number of tests, including at-home tests, that are covered if ordered or administered by a health care provider following an individualized clinical assessment.

COVID-19 Positive Cases

If you are symptomatic — even if you believe you just have a cold — please contact your personal healthcare provider for further evaluation and guidance.

If you test positive for COVID-19, please contact our Health Services Department immediately at infirmary@hpa.edu (Upper School) or vcinfirmary@hpa.edu (Village Campus). Once we are notified of a positive COVID-19 case, we are committed to maintaining our close contact tracing protocols.

What does fully vaccinated* or up to date** mean?

Fully vaccinated:*

A person who has received their primary series of COVID-19 vaccines only. This means two weeks have passed since the second of two doses in a Pfizer or Moderna

series, or the single dose of Johnson & Johnson.

Up to date:**

A person who has received all recommended COVID-19 vaccines, including any booster dose(s) **once eligible**. This means they have completed their primary vaccination series within the past five months if vaccinated with Pfizer or Moderna, or the past two months if vaccinated with Johnson & Johnson. Additionally, two weeks must have passed from their second vaccination dose in the primary series. A person is considered "boosted" and up to date right after their booster dose.

Please keep in mind, the CDC recommends that everyone age 5-years and older get their primary series of COVID-19 vaccines and receive their booster dose as soon as they are eligible.

Approval to return to campus for in-person instruction and other school activities

Regardless of vaccination status, individuals who do not submit a negative COVID-19 test result taken on the fifth day after exposure will not be allowed to continue in-person instruction or participation in other school events until the negative test result is received and approved by HPA Health Services.

COVID-19 Communications

We will send COVID-19 Communication emails to the specific class, division, or group identified as needing immediate notification. Otherwise, all updates will appear in the 'COVID-19 Communications' section of the '2021-2022 COVID-19 Plans & Information' [Resource Board on myHPA](#). Students and families will always have access to this resource board to check daily, should they wish to. This decision was made in an effort to balance our commitment to transparency and accountability with COVID-19 notifications and our desire to limit the number of correspondence families receive daily that may not personally impact them.

Campus Access

During this time, campus access is limited to current students, employees, essential contractors, and approved guests — all of whom have completed a daily thermal/symptom check and a screening questionnaire.

Should a family member of a student need a meeting with a faculty, staff, or administrative team member, kindly contact them so that they can apply to have you come to campus. If approved, they will then send you a COVID-19 questionnaire. From that point, security team members will be alerted to your appointment date and time, and let you onto campus.

At the Upper School, please do not park in the Day Student Parking Lot (DSPL) and walk-in without an appointment. Similarly, at the Village Campus, kindly call or email for an appointment so that arrangements can be made. Please remember, masks are required on campus at all times when indoors. As a visitor, on either campus, you will be asked for a temperature check. Mahalo for your understanding and respect for this process.

CrisisGo for Parents

It is important that all families are set up with CrisisGo, HPA's school emergency communication tool. To set up a CrisisGo SMS/Email subscription, please click on this [invitation link](#) and complete the form by adding your name, email, and cell number (this is an important step if you would like to receive an SMS message) and click on the Subscribe button. Should an emergency occur you will be alerted by email and SMS messaging. You can also locate these instructions by logging into [myHPA](#), clicking on the resource tab, and selecting the CrisisGo Safe2SpeakUp tile.

Safe2SpeakUp for Middle and Upper Students

Similarly, Middle and Upper School students received instructions during orientation on how to upload the Safe2SpeakUp app. This is a companion app to CrisisGo. It will allow the school to alert students of emergencies and enable students to communicate with us should there be any behaviors they are concerned about. Students can also locate instructions on setting up Safe2SpeakUp in myHPA.

All students can also submit an Online Bully/Harassment report by [clicking on this link](#), which can also be located on the CrisisGo Safe2SpeakUp tile on [myHPA](#).

Isaacs Art Center

[Isaacs Art Center](#) is free and open to the public, Monday through Friday from 10:00 am to 5:00 pm, and on Saturdays by appointment. Gallery works for sale may also be viewed on our [website](#). Be sure to also visit our [Instagram](#) and [Facebook](#) pages for highlights from ongoing exhibitions. Sales from gallery artwork have supported the HPA Financial Aid program since opening in 2004.

'Ohana Association

The 'Ohana Association is a parent volunteer organization, which is affiliated with and coordinates closely with the school. Every HPA parent is a member of the 'Ohana Association and all are welcome to join us at our 'Ohana Association Board meetings, which will be announced on the 'Ohana Association myHPA resource page and can be located on the [myHPA school calendar](#). Our mission is to support a great experience for every HPA student, as well as to foster a sense of community within the student body, parents and families, the staff and faculty of HPA, and the local community.

Please be sure to visit the 'Ohana Association section on the [myHPA Resource Page](#) for updates on future events and volunteer opportunities. Stay connected with us by joining the [HPA Parent Resource Hub on Facebook!](#)



2021-2022 COVID-19 Plans & Information

Past HPA communications and other important information can be found on [myHPA](#). We are continuing to make updates to our student and parent resource boards, so please be sure to visit them regularly. For a complete directory of all our health and safety protocols, please review our [2021-2022 COVID-19 Plans and Information](#) tile.



PREVIOUS ALL-SCHOOL BULLETINS

[All-School Bulletin: February 18, 2022](#)

[All-School Bulletin: February 11, 2022](#)

[All-School Bulletin: February 4, 2022](#)



[All-School Bulletin: January 28, 2022](#)

[All-School Bulletin: January 21, 2022](#)

[All-School Bulletin: December 10, 2021](#)

[All-School Bulletin: December 3, 2021](#)

[All-School Bulletin: November 19, 2021](#)

Mahalo to all our students, families, faculty, and staff for everything you're doing to keep our campuses and community as safe as possible as we navigate the start of our 2021-2022 academic year. Together we are #KaMakaniSTRONG!

Take the next step


[REQUEST INFO](#)


[VISIT CAMPUS](#)

[APPLY NOW](#)



Hawai'i Preparatory Academy

 65-1692 Kohala Mountain Road
Kamuela, HI 96743

 808.885.7321



[About](#)
[Admissions](#)
[Academics](#)
[Student Life](#)
[Athletics](#)
[Arts](#)
[Giving](#)
[Site Map](#)
[Privacy Policy](#)

[ALUMNI](#)
[PARENTS](#)
[STUDENTS](#)
[FACULTY & STAFF](#)